

Capitol Park Hotel Temporary Shelter

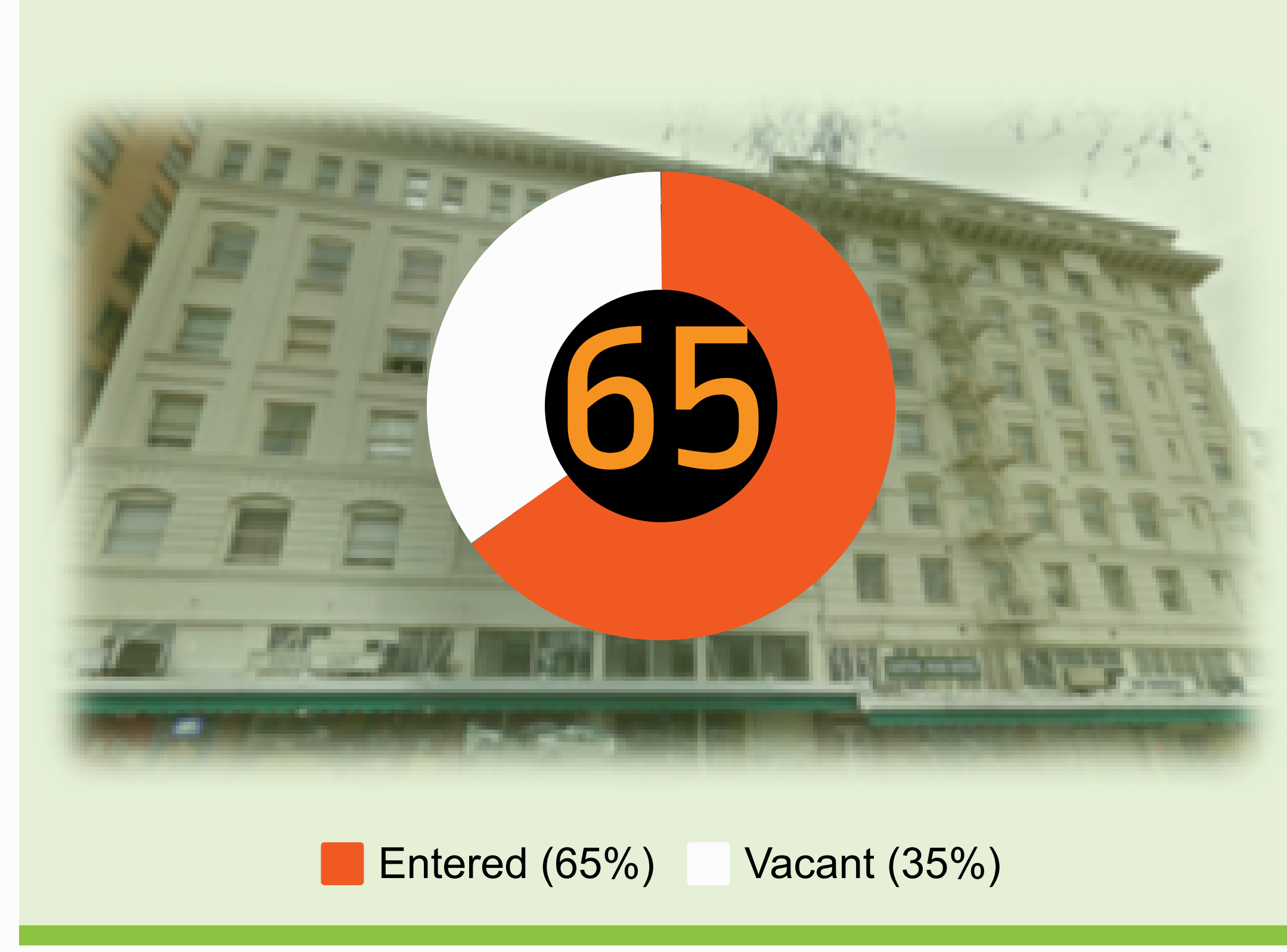


Opened September 3, 2019

Monthly Report- September 2019

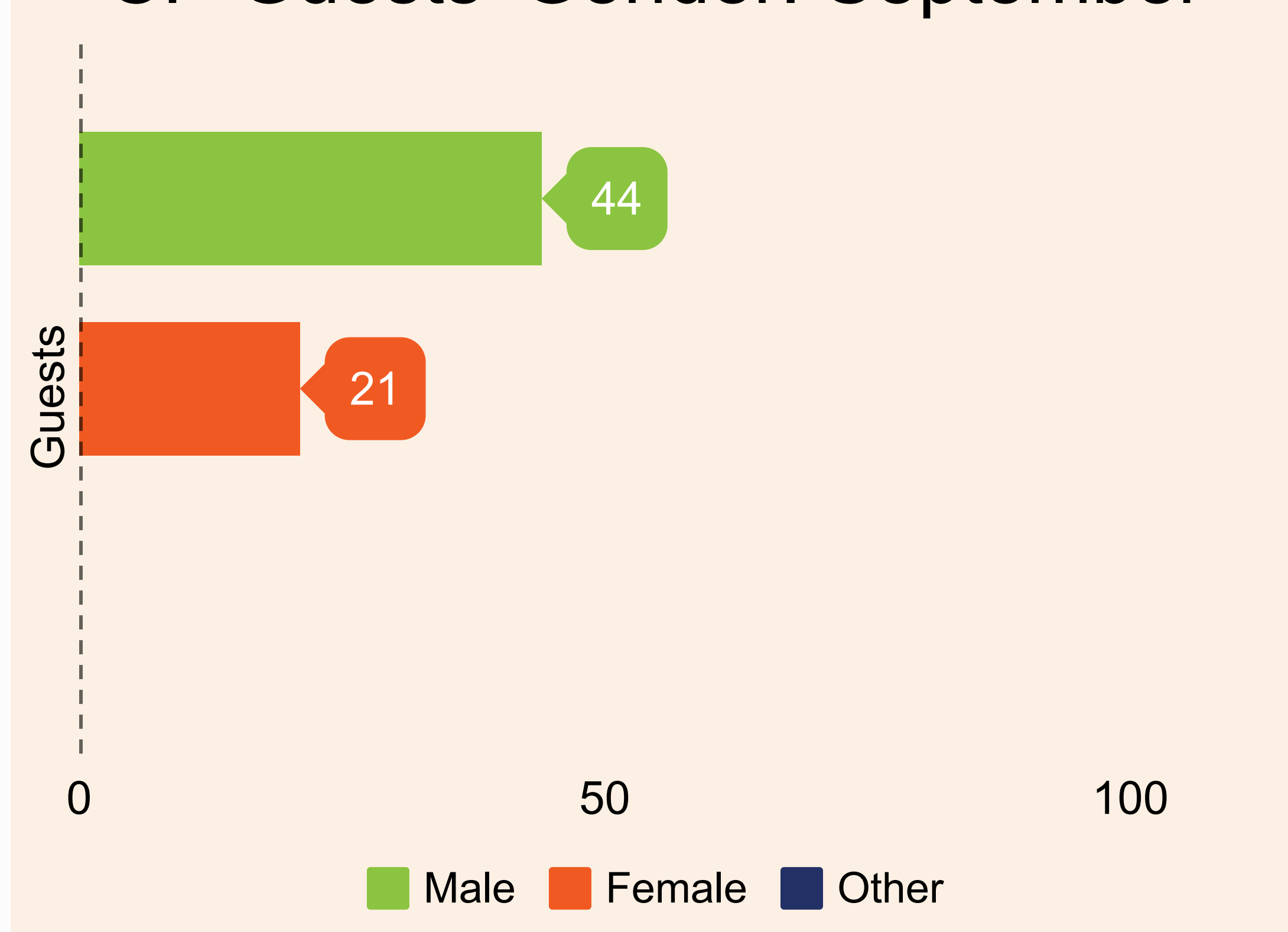
Capitol Park Hotel Temporary Shelter (CP): STATUS

CP Guests Entered: September



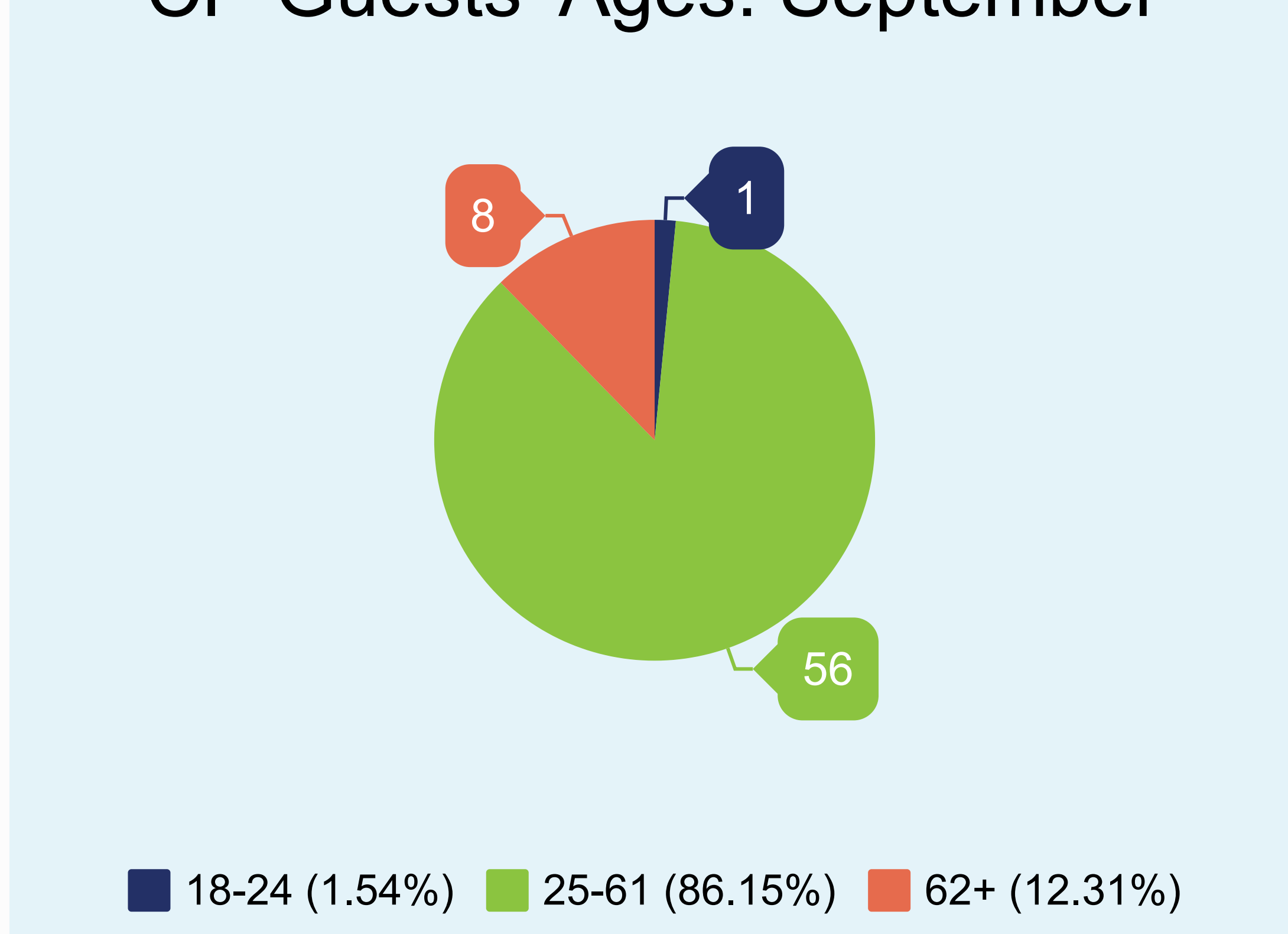
CP STATUS - GENDER

CP Guests' Gender: September



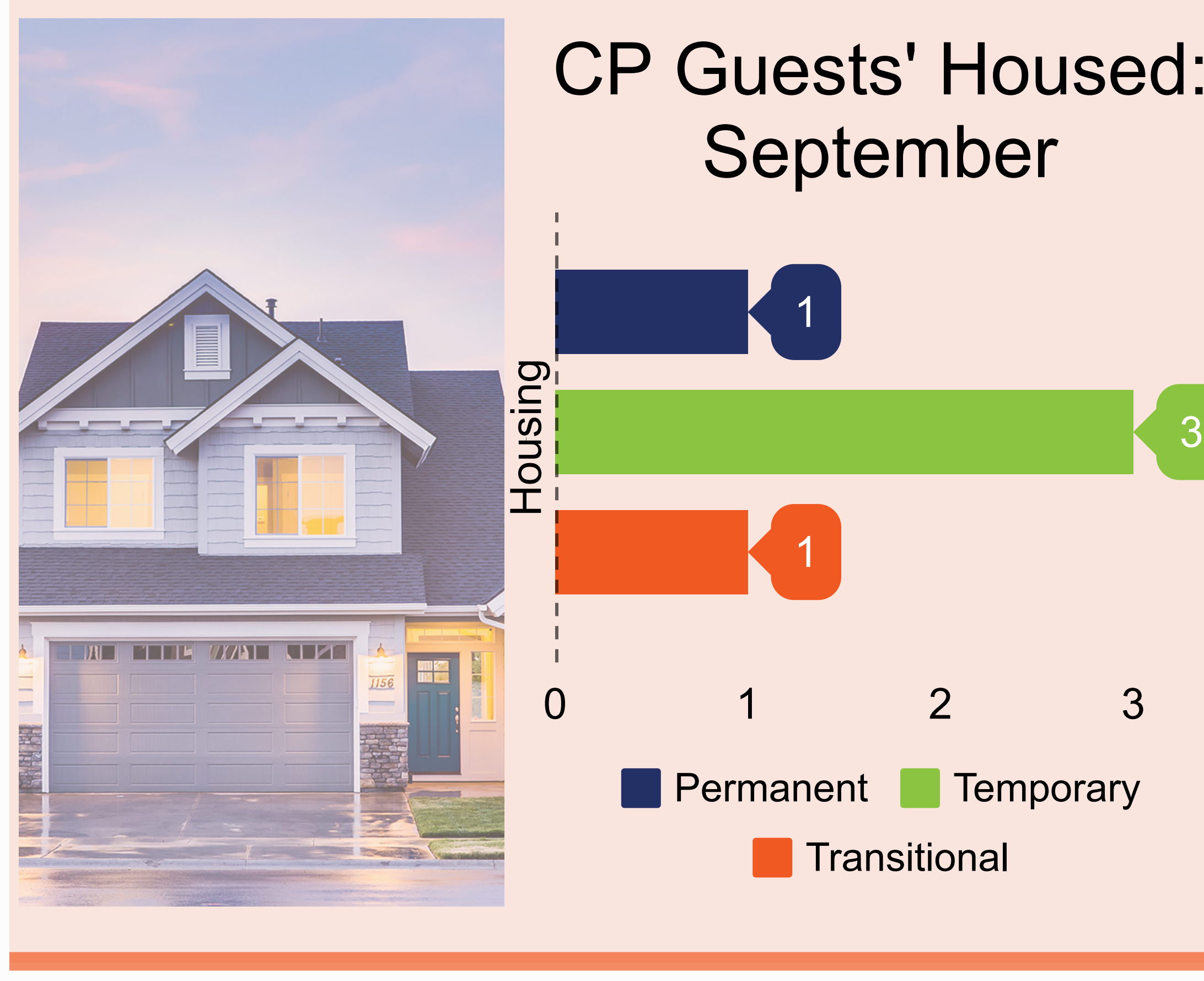
CP STATUS - AGE

CP Guests' Ages: September



CP STATUS - HOUSED

CP Guests' Housed: September



Housing Terms Defined

Permanent Housing:

The program participant must be the tenant on a lease (or sublease) for an initial term of at least one year that is renewable and is terminable only for cause.

Temporary Housing:

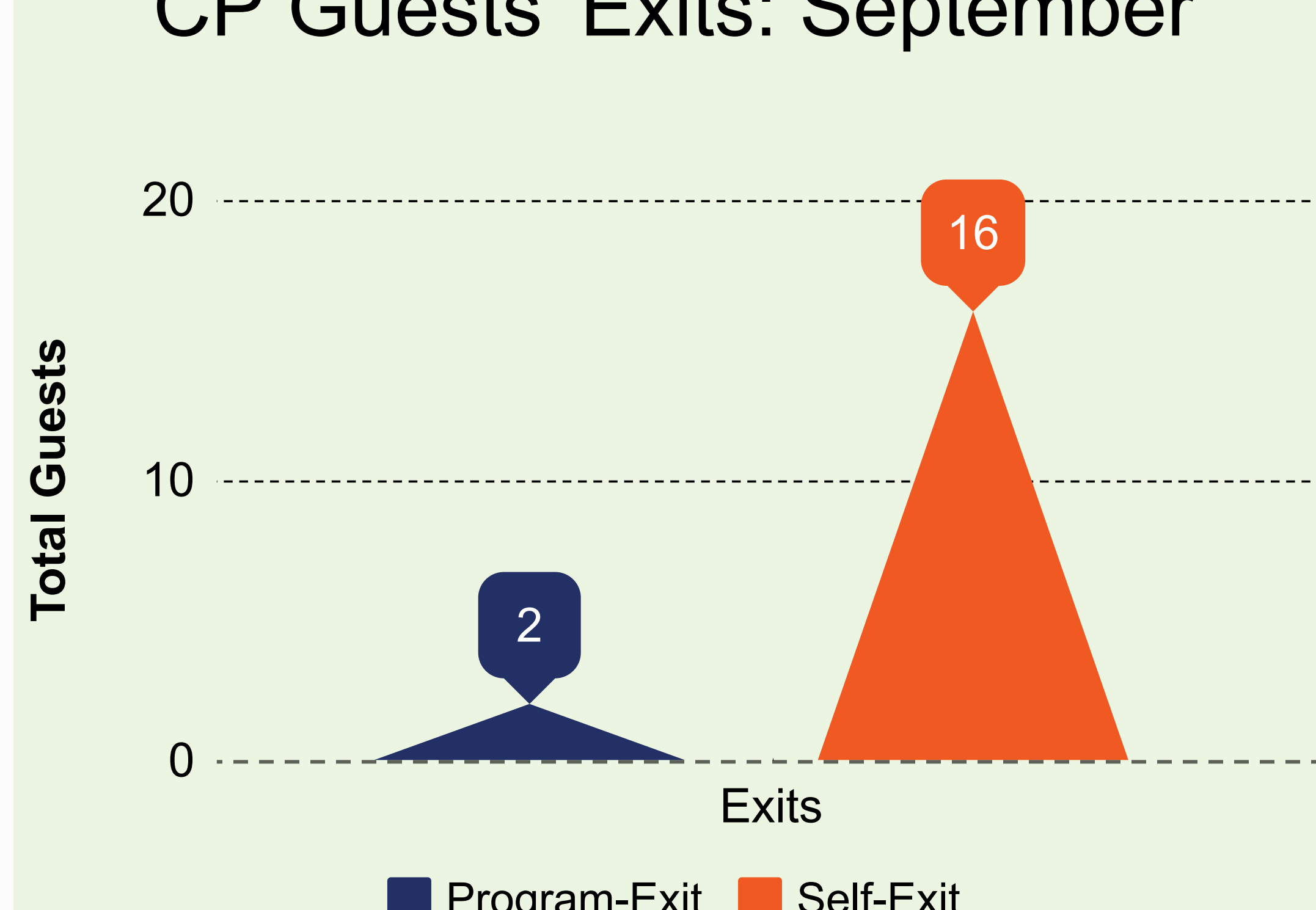
The program participant declares they are living on a temporary basis with family or friends.

Transitional Housing:

The program participant can live in housing for a defined time period and may include supportive services.

CP STATUS - EXITS

CP Guests' Exits: September



Exits Defined

Program-Exit:

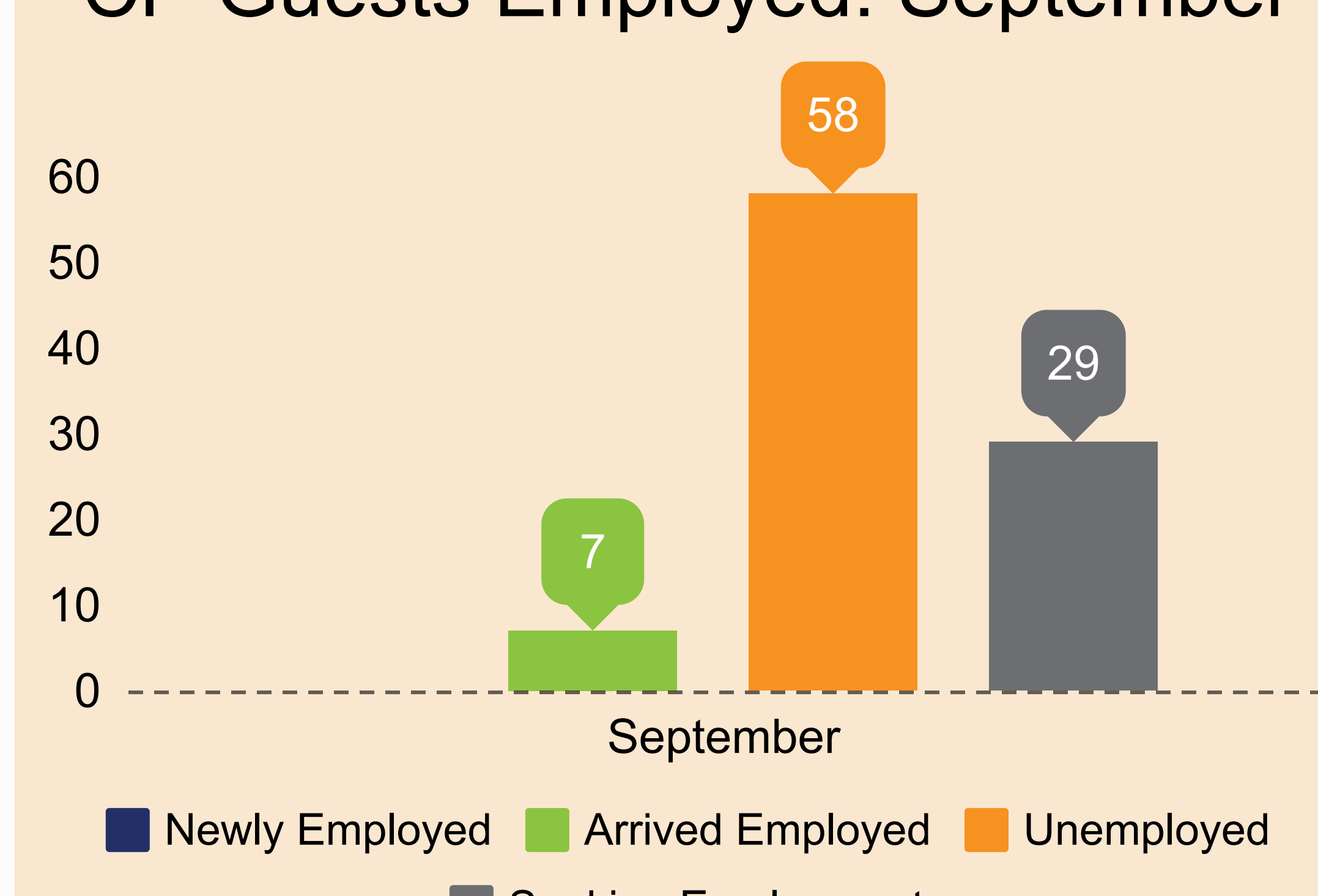
Exit based on noncompliance of program rules.

Self-Exit:

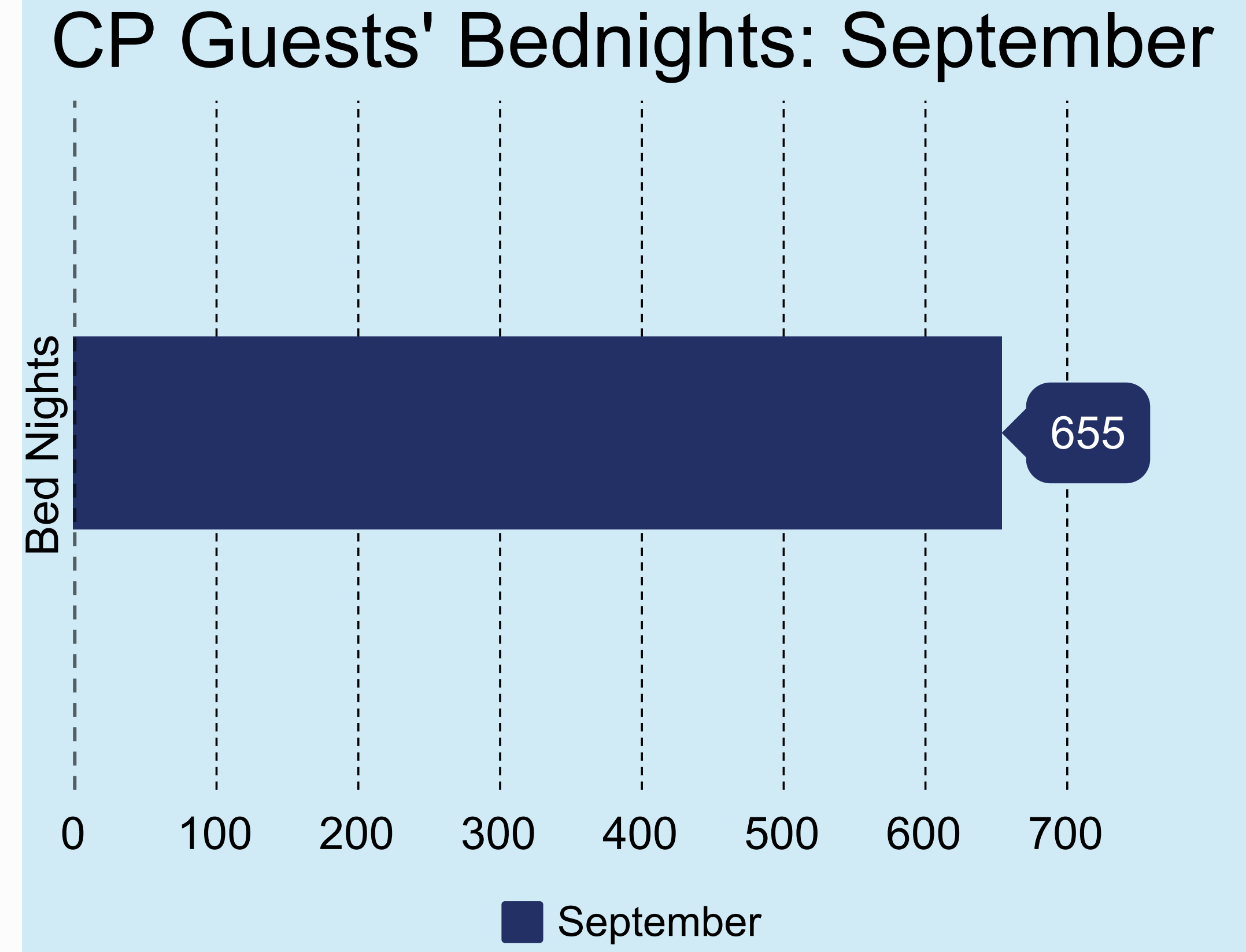
Exit based on the guest leaving the program of their own choice.

CP STATUS - SERVICES

CP Guests Employed: September



CP Guests' Bednights: September



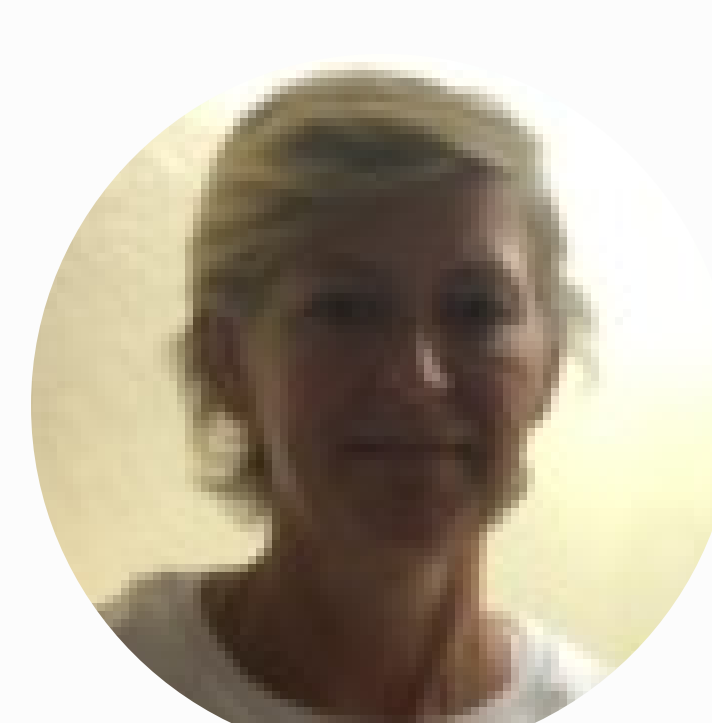
CP SPOT LIGHT



Dorthy
CP Guest



Dionne
CP Guest



Lonna
CP Guest

Question:
How long have you been staying with us at CP?

"I have been staying here one week...this was the best thing to happen to me ... I went from bus stops, to the cement, to the park. It was very hard and ugly outdoors. I wish I could have been rescued weeks ago"

Question:
What is the best thing that happened to you this week?

"Being able to self motivate..."

Question:
Where would you like to be a year from now?

"Gainfully employed, renting an apartment, looking forward to the future; provide for myself and a pet. I would love to have a pet again"